



# Utility Construction Management Software

## ALL-IN-ONE PROJECT MANAGEMENT FOR UTILITIES & TELECOM

Vitruvi is an award-winning end-to-end, GIS-based, construction management platform that connects asset owners, operators, builders, and contractors in one easy-to-use digital platform.

---



# Optimize Cost, Quality & Schedule with 5D-BIM

Vitruvi delivers maximized cost savings, efficiency, and quality assurance.

As planners, designers, and builders of complex networks, we've felt the pain of a disconnected process. Vitruvi was created for utility and telecom construction teams. From owner to builder to contractor, nothing is left to interpretation—all workflows are conducted in a single easy-to-use platform that's informed by real-time collaboration.



- Upload designs and maps in seconds



- Auto-generate material costs, work orders, and schedules



- Easily assign and approve fieldwork from any device

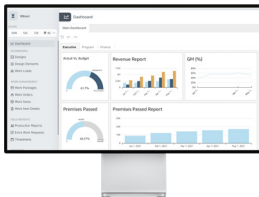


- Record redlines and as-builts in real-time in the field



- Manage project financials and reconcile billings

## A GIS Platform to Empower Your Project & Construction Managers



### Program Management

Use dashboards to gain visibility on key milestone activities and statuses.



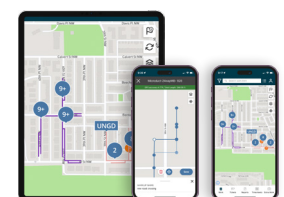
### Financial Management

Plan, budget, and track all aspects of asset deployment.



### Construction Management

Assign, schedule, coordinate, and track resources and break down silos.



### Field Workforce Management

Use mobile reporting to provide real-time production updates.

INCREASE PMO  
EFFICIENCY BY  
**1.5X**

**850+**  
APIs TO SUPPORT AN  
INTEGRATED TECHNOLOGY  
ECOSYSTEM

REDUCE PRODUCTION,  
RE-WORK &  
REPORTING COSTS BY  
**84%**

SUBMIT DIGITIZED  
AS-BUILTS TO CLOSE  
OUT **3X** FASTER

# Move From Trackers to An Integrated Platform

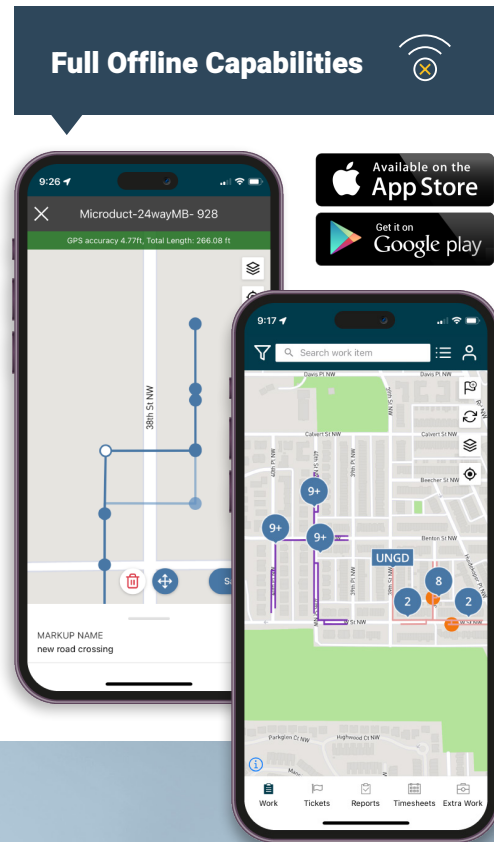
Linear utility projects no longer need to be managed with lists, spreadsheets, highlighters, and pins on a map. GIS functionality is at the core of Vitruvi, everything is tied into the map. With live project visualization at your fingertips, every collaborator has the ability to interpret, prioritize, and close out work as it happens.

Vitruvi's mobile map markup tool allows crews to change or edit the location of their fieldwork directly from their phone or tablet. No more marking up paper. No more filing trackers or spreadsheets at the end of the day. Do it digitally, in real-time, and allow team members to switch between what was engineered and what's being built.

## Streamline Your Unit Tracking, QA & Close-Out Process

With everyone on the same page, at all times, you'll be able to get work over the line faster. What took weeks to report, now takes minutes. Expedite your surveys, work assignments, digital as-builts, change-order requests, and all other downstream construction activity.

- Field work is immediately available for review and approval
- Design markups are mapped and integrated with third-party systems
- Real-time communication means less downtime and more field utilization
- Truck-rolls are reduced by clear photo documentation of completed work
- Contractor invoice validation is seamless and project financials are fully visible



VITRUVI HAS STREAMLINED OUR PROGRAMS ACROSS MULTIPLE GEOGRAPHIES, CREATING GREATER VISIBILITY AND IMPROVED PREDICTABILITY. WITH VITRUVI, OUR PROCESSES HAVE IMPROVED AND TEAMS HAVE REALIZED GREAT TIME SAVINGS.

-ELI WEYEN, VP OPERATIONS





## Powering the Build-Out of a Connected World

Experience a step change to unlock the next  
evolution in productivity and value creation.

Want to see  
Vitruvi in action?

Ask us about a  
proof-of-concept.

Representatives are available in  
the US, Canada, and the UK.

**Phone** +1 587 329 6197  
**Email** [sales@vitruvisoftware.com](mailto:sales@vitruvisoftware.com)  
**Web** [vitruvisoftware.com](http://vitruvisoftware.com)



**50** Technology **Fast 50**  
2022 CANADA  
Deloitte.

**vitruvi**